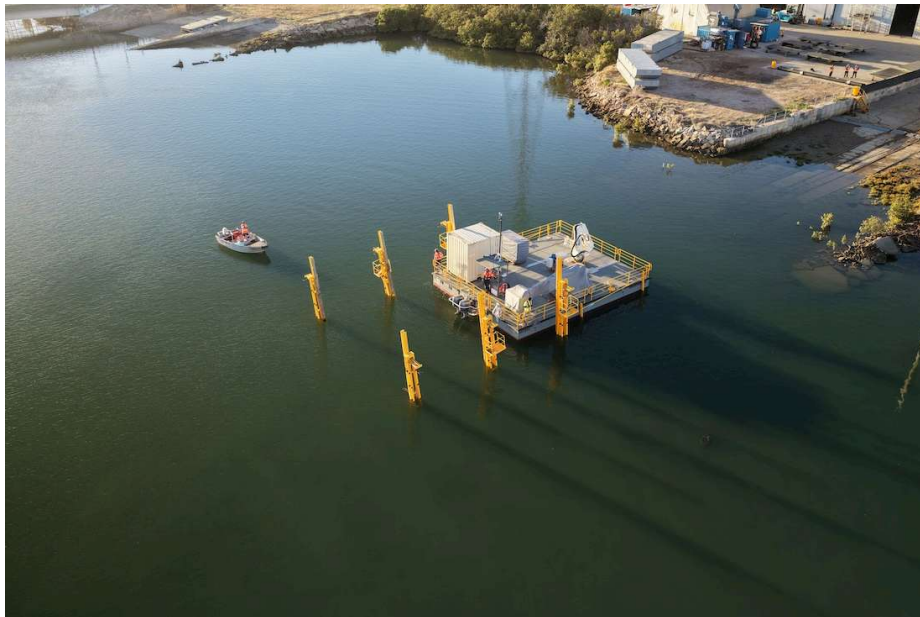


SHIPPING

## FPH welcomes Wharfside one to the fleet

Published on: 27th Mar, 2026

On Tuesday 3rd March 2026, **Flinders Port Holdings** (FPH) welcomed their new, industry leading self-propelled barge named **Wharfside One**.



Collaborating with MG Engineering from concept through to commissioning, another proud South Australian business, this vessel was designed and fabricated to meet FPH's specific operational needs.

*"Wharfside One is a clear example of the strength within South Australia's maritime engineering sector, highlighting what is possible when local industry works together to create innovative, purpose-built maritime solutions that enhance sovereign capability."* – **Anthony Brdar, Managing Director MG Engineering.**

The unique diesel outboard motor design enhances safety and reduces risks that are associated with more flammable fuels. Incorporating a diesel motor eliminates the need for petrol fuel storage on the vessel, significantly reducing the risk associated with hot works and allows the barge to perform maintenance on fuel berths when a vessel is alongside.



The modular design of the barge, comprising of three separate sections, enables the vessel to be transported to regional ports. FPH own and operate the Flinders Adelaide Container Terminal, the port of Port Adelaide and six key regional ports (Port Giles, Port Lincoln, Wallaroo, Port Pirie, Klein Point and Thevenard). The flexibility to service all these locations is a significant benefit to the business.

Onboard is an electric Elevated Work Platform (EWP), a fixed crane capable of lifting 2.1 tonnes at a reach of 8.2 metres, generator and crib room.

**FPH CEO Stewart Lammin** welcomed Wharfside One and the investment in safety and providing the team with the right equipment.

*“The primary benefit of this investment is the safety and wellbeing of our people. Achieving our strategic and operational objectives depends on this foundation, and the continued investment in our assets and workforce is critical to meeting these. By providing our teams with the right resources and equipment, we are empowering them to work more efficiently, reduce the time it takes to inspect and repair marine structure defects, and most importantly, improve the safety of our water-side maintenance activities. ”*

The name Wharfside One was chosen through an internal competition for FPH employees. It pays tribute to the location where the barge will spend most of its operational life, alongside the wharf. The “One” pays homage to FPH’s OneFPH ethos, representing the shared vision and collaboration across the Group.

The investment marks an important milestone for FPH as it reflects their commitment to building strong internal capability to efficiently maintain their assets and continue delivering reliable service to their customers.